



Certificate of Analysis

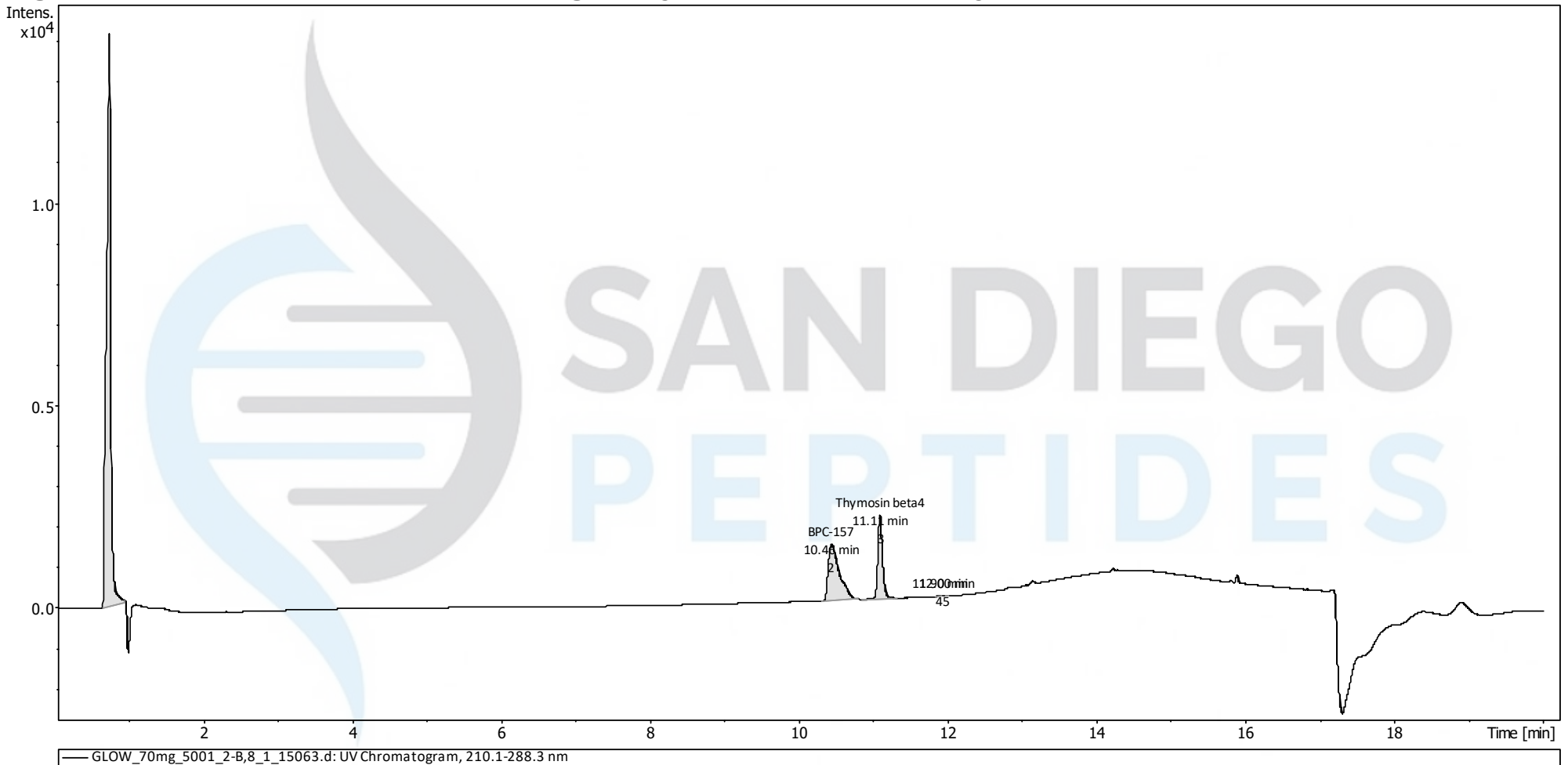
GLOW 70 mg

Compounds : **GHK-Cu**
BPC-157
Thymosin beta4

Client : **San Diego Peptides**
www.sandiegopeptides.com

Lot number : **5001**
Analysis date : **2026-04-01**
Purity % : **99.95%**
Method : **HPLC-UV-MS**

High Performance Liquid Chromatography (HPLC) UV – Purity Test



PEAK LIST		Number of detected peaks: 5		
	Time (min)	Area	%Area	
1	0.78	5.63E+04	70.66	GHK-Cu
2	10.46	1.45E+04	18.17	BPC-157
3	11.11	8.86E+03	11.12	Thymosin beta4
4	11.90	2.53E+01	0.03	
5	12.00	1.13E+01	0.01	

Overall Purity : 99.95

Analysis Performed by
 Ken Pendarvis, ChE
 Analytical Chemist
 MZ Biolabs
contact@mzbiolabs.com



2026-04-03

Note: Injectable peptides may contain salts and sugars to aid in solubility and act as pH buffers. These are not normally detected using UV and are not considered impurities.

GLOW 70 mg

Mass Spectrometry (MS) – Identity Test

Identity confirmed using HPLC-MS

Molecular weight calculated using monoisotopic m/z values from mass spectrum

Note : Monoisotopic m/z values are not easily seen in full spectrum view for larger molecules and peptides.
The dominant isotopic peak (base peak) shown in the spectrum below can be used to approximate the average molecular weight frequently reported by vendors and databases as a secondary means of confirmation.

GHK-Cu PubChem CID: 71587328

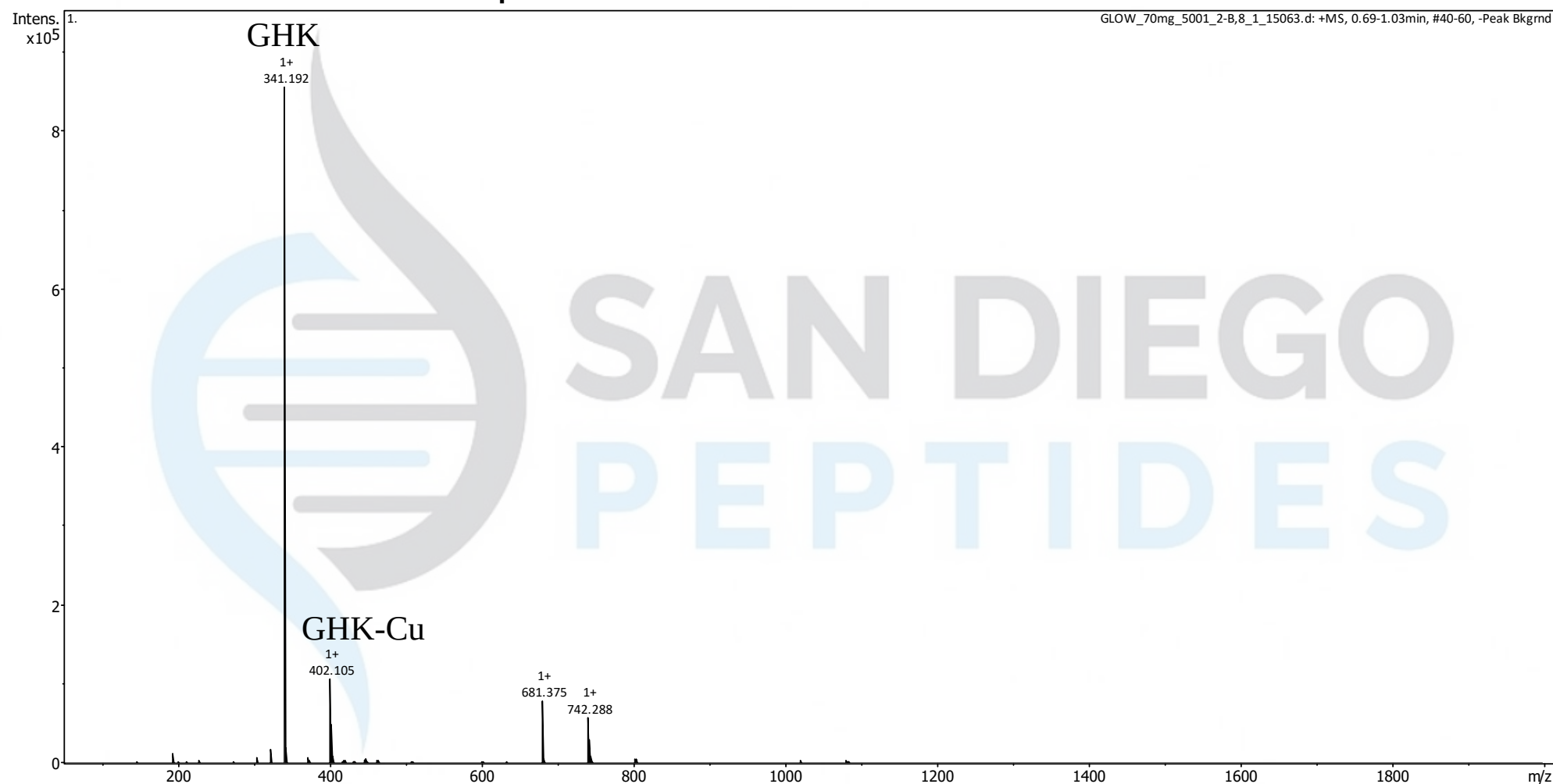
<https://pubchem.ncbi.nlm.nih.gov/compound/71587328>

Expected monoisotopic mass : 402.10 Da

Measured monoisotopic mass : 402.11 Da

Molecular weight confirmed

GHK-Cu recorded MS spectrum



Analysis Performed by
Ken Pendarvis, ChE
Analytical Chemist
MZ Biolabs
contact@mzbiolabs.com



2026-04-03

GLOW 70 mg

Mass Spectrometry (MS) – Identity Test

Identity confirmed using HPLC-MS

Molecular weight calculated using monoisotopic m/z values from mass spectrum

Note : Monoisotopic m/z values are not easily seen in full spectrum view for larger molecules and peptides.
The dominant isotopic peak (base peak) shown in the spectrum below can be used to approximate the average molecular weight frequently reported by vendors and databases as a secondary means of confirmation.

BPC-157 PubChem CID: 9941957

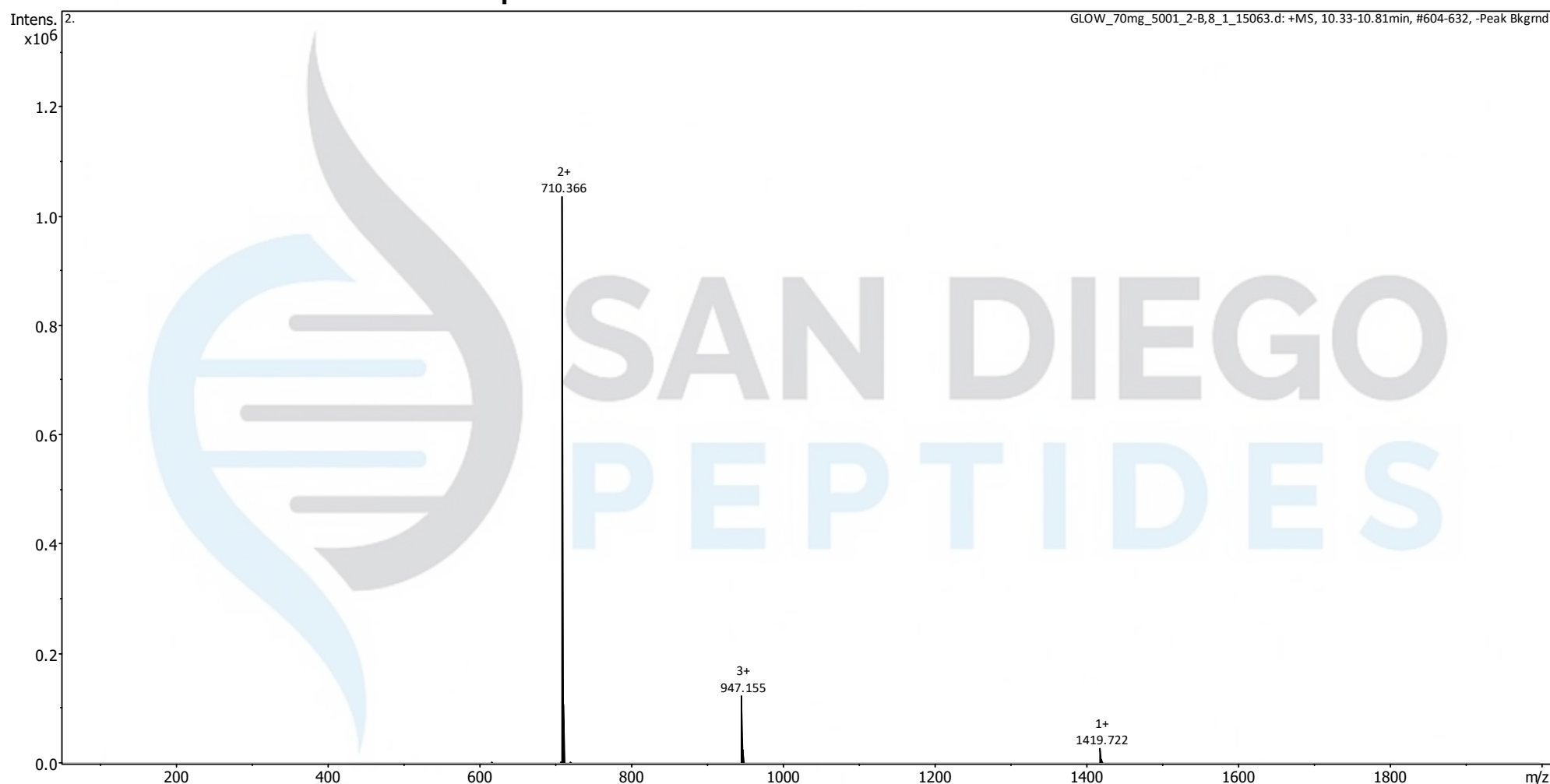
<https://pubchem.ncbi.nlm.nih.gov/compound/9941957>

Expected monoisotopic mass : 1418.70 Da

Measured monoisotopic mass : 1418.72 Da

Molecular weight confirmed

BPC-157 recorded MS spectrum



Analysis Performed by
Ken Pendarvis, ChE
Analytical Chemist
MZ Biolabs
contact@mzbiolabs.com



2026-04-03

GLOW 70 mg

Mass Spectrometry (MS) – Identity Test

Identity confirmed using HPLC-MS

Molecular weight calculated using monoisotopic m/z values from mass spectrum

Note : Monoisotopic m/z values are not easily seen in full spectrum view for larger molecules and peptides.
The dominant isotopic peak (base peak) shown in the spectrum below can be used to approximate the average molecular weight frequently reported by vendors and databases as a secondary means of confirmation.

Thymosin beta4 PubChem CID: 16132341

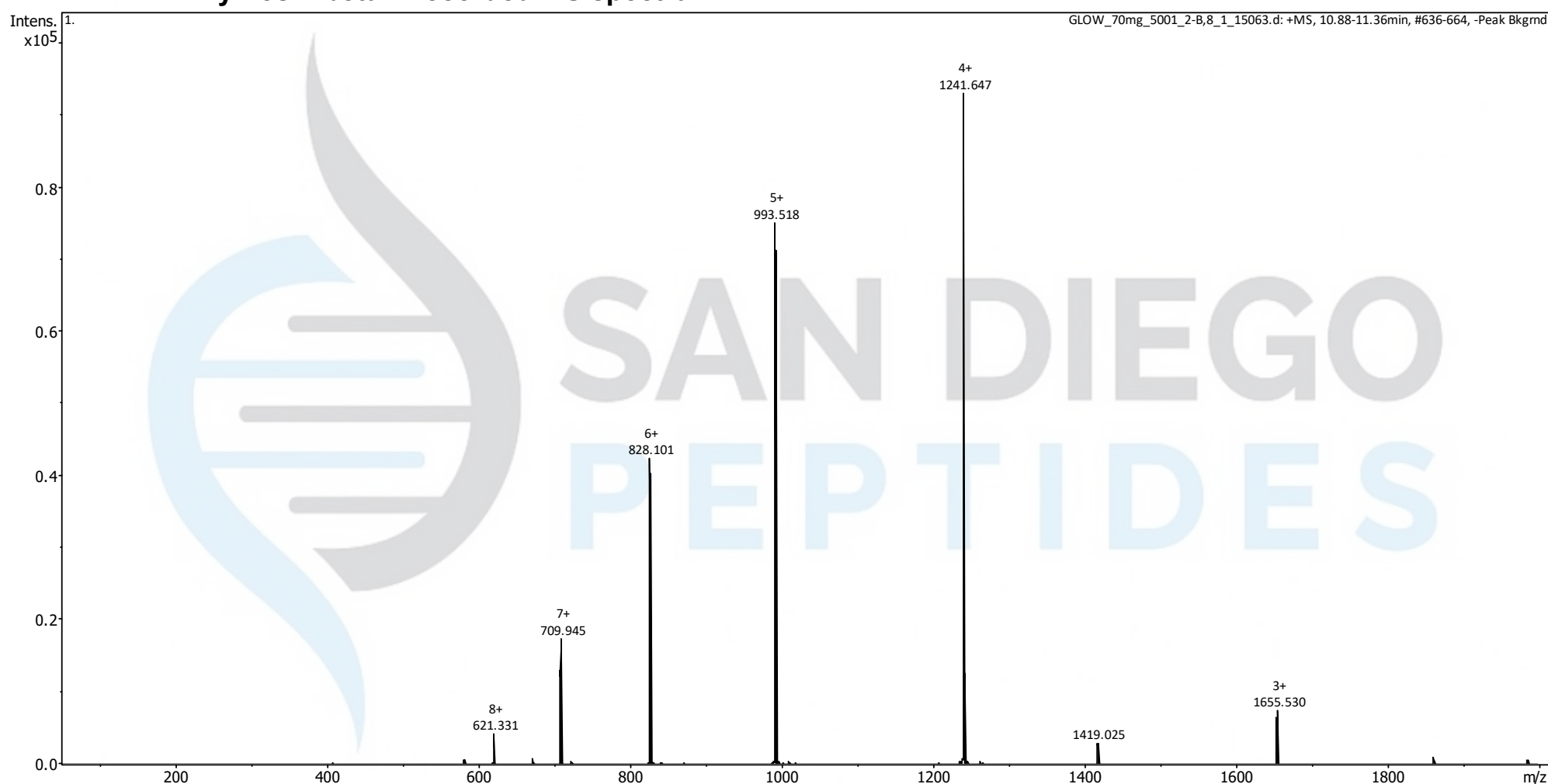
<https://pubchem.ncbi.nlm.nih.gov/compound/16132341>

Expected monoisotopic mass : 4960.48 Da

Measured monoisotopic mass : 4960.52 Da

Molecular weight confirmed

Thymosin beta4 Recorded MS spectrum



Analysis Performed by
Ken Pendarvis, ChE
Analytical Chemist
MZ Biolabs
contact@mzbiolabs.com



2026-04-03