



PROOF OF AUTHENTICITY



MZ Biolabs  
2102 N Country Club Rd  
Tucson, AZ 85716  
[contact@mzbiolabs.com](mailto:contact@mzbiolabs.com)  
[www.mzbiolabs.com](http://www.mzbiolabs.com)

# Certificate of Analysis

KLOW (GHK-Cu, BPC-157, Thymosin beta4, KPV) 70 mg

**Compounds** : **KPV, GHK-CU**  
**BPC-157, Thymosin beta4**

**Client** : **San Diego Peptides**  
[www.sandiegopeptides.com](http://www.sandiegopeptides.com)

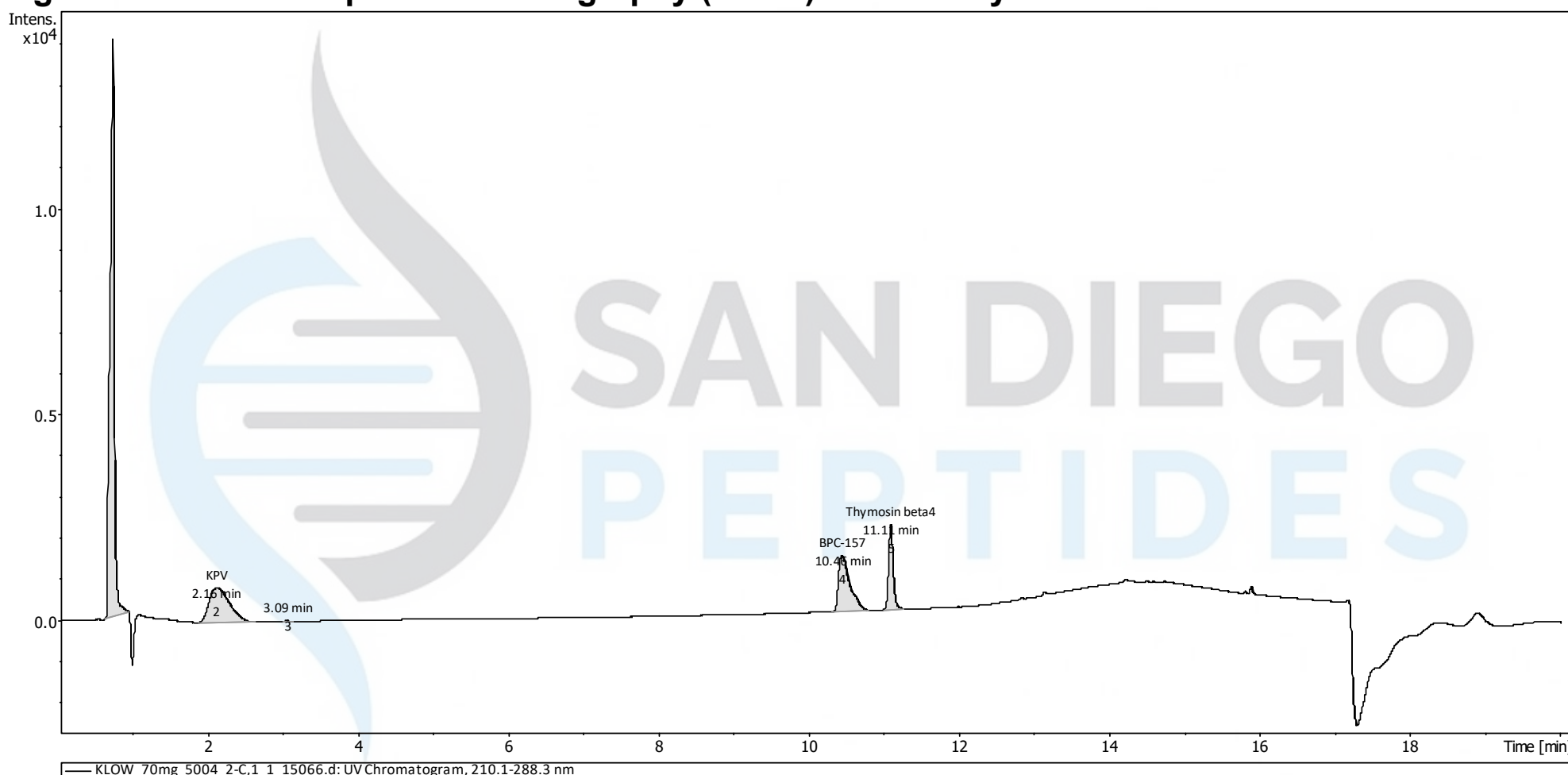
**Lot number** : **5004**

**Analysis date** : **2026-04-01**

**Purity %** : **99.88%**

**Method** : **HPLC-UV-MS**

## High Performance Liquid Chromatography (HPLC) UV – Purity Test



PEAK LIST		Number of detected peaks: 5		
	Time (min)	Area	%Area	
1	0.78	5.53E+04	58.73	GHK-Cu
2	2.16	1.58E+04	16.78	KPV
3	3.09	1.19E+02	0.13	
4	10.46	1.42E+04	15.10	BPC-157
5	11.11	8.73E+03	9.27	Thymosin beta4

**Overall Purity : 99.88**

Analysis Performed by  
Ken Pendarvis, ChE  
Analytical Chemist  
MZ Biolabs  
[contact@mzbiolabs.com](mailto:contact@mzbiolabs.com)

2026-04-03

Note: Injectable peptides may contain salts and sugars to aid in solubility and act as pH buffers. These are not normally detected using UV and are not considered impurities.

## GHK-Cu, BPC-157, Thymosin beta4, KPV

### Mass Spectrometry (MS) – Identity Test

#### Identity confirmed using HPLC-MS

Molecular weight calculated using monoisotopic m/z values from mass spectrum

#### GHK-Cu PubChem CID: 71587328

<https://pubchem.ncbi.nlm.nih.gov/compound/71587328>

Expected monoisotopic mass : 402.10 Da

Measured monoisotopic mass : 402.10 Da

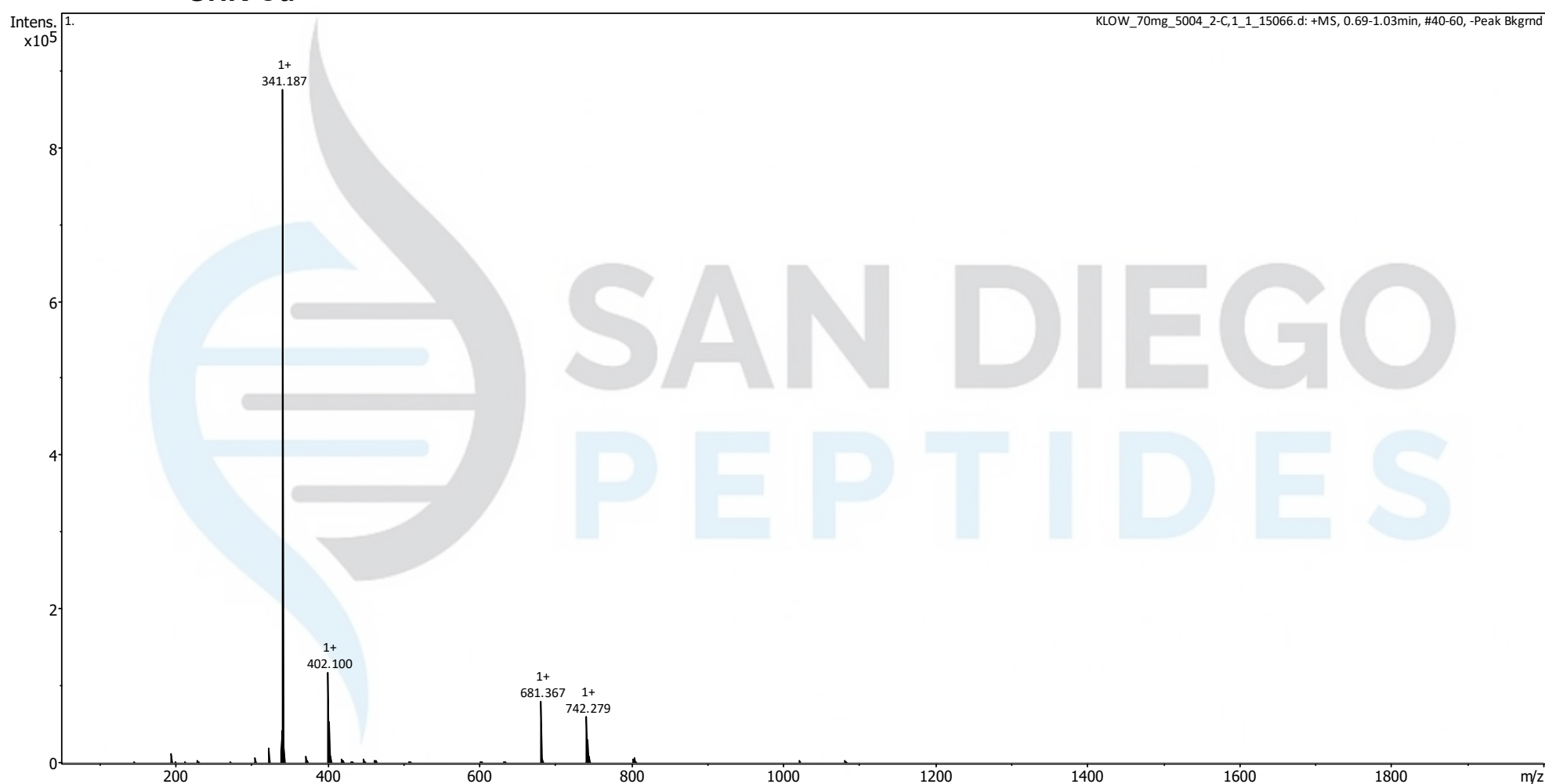
**Molecular weight confirmed**

Note : Monoisotopic m/z values are not easily seen in full spectrum view for larger molecules and peptides.

The dominant isotopic peak (base peak) shown in the spectrum below can be used to approximate the average molecular weight frequently reported by vendors and databases as a secondary means of confirmation.

Recorded MS spectrum

#### GHK-Cu



Analysis Performed by  
Ken Pendarvis, ChE  
Analytical Chemist  
MZ Biolabs  
[contact@mzbiolabs.com](mailto:contact@mzbiolabs.com)



2026-04-03

## GHK-Cu, BPC-157, Thymosin beta4, KPV

### Mass Spectrometry (MS) – Identity Test

#### Identity confirmed using HPLC-MS

Molecular weight calculated using monoisotopic m/z values from mass spectrum

#### BPC-157 PubChem CID: 9941957

<https://pubchem.ncbi.nlm.nih.gov/compound/9941957>

Expected monoisotopic mass : 1418.70 Da

Measured monoisotopic mass : 1418.70 Da

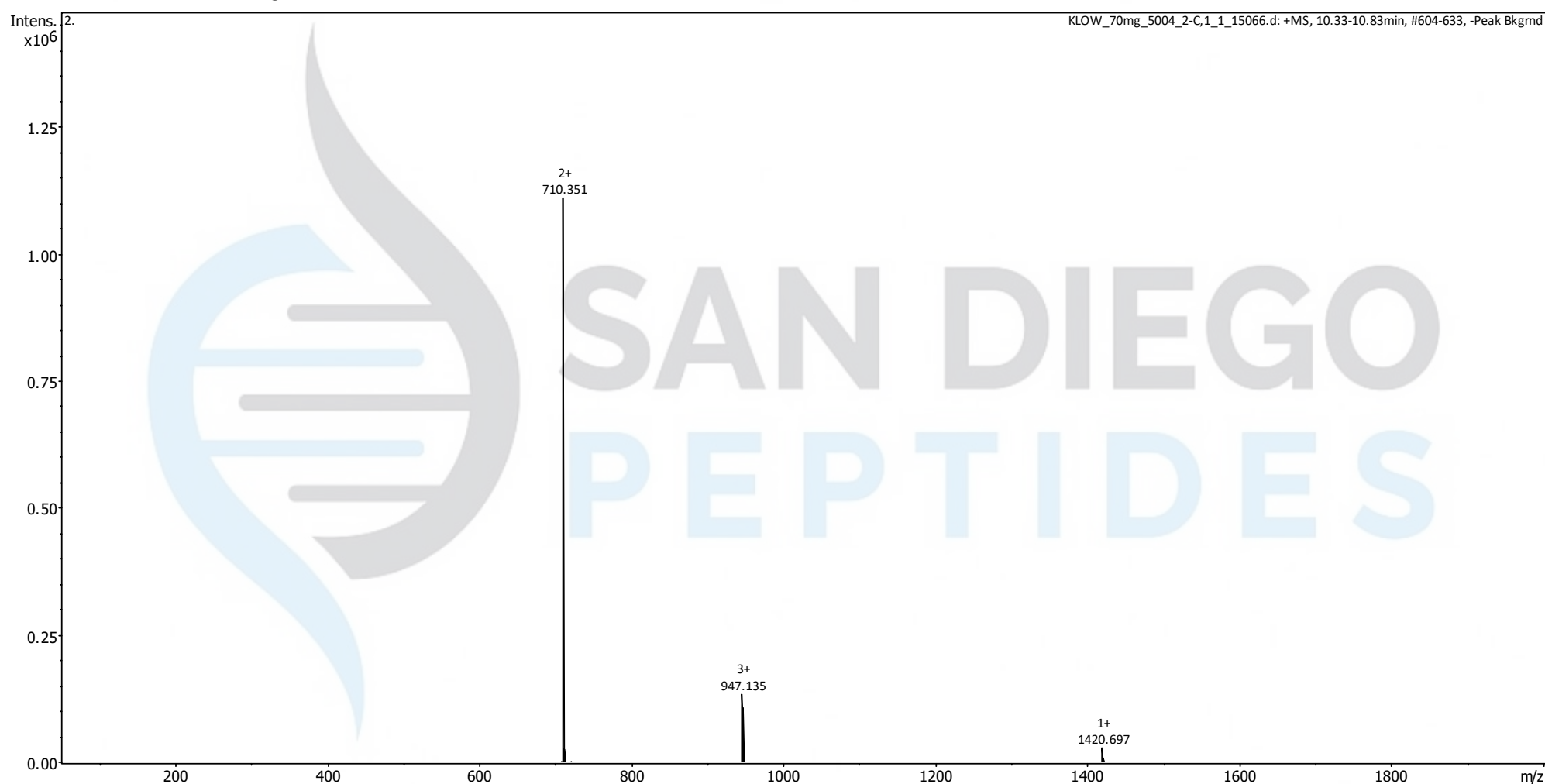
**Molecular weight confirmed**

Note : Monoisotopic m/z values are not easily seen in full spectrum view for larger molecules and peptides.

The dominant isotopic peak (base peak) shown in the spectrum below can be used to approximate the average molecular weight frequently reported by vendors and databases as a secondary means of confirmation.

Recorded MS spectrum

#### BPC-157



Analysis Performed by  
Ken Pendarvis, ChE  
Analytical Chemist  
MZ Biolabs  
[contact@mzbiolabs.com](mailto:contact@mzbiolabs.com)



2026-04-03

## GHK-Cu, BPC-157, Thymosin beta4, KPV

### Mass Spectrometry (MS) – Identity Test

#### Identity confirmed using HPLC-MS

Molecular weight calculated using monoisotopic m/z values from mass spectrum

#### Thymosin beta4 PubChem CID: 16132341

<https://pubchem.ncbi.nlm.nih.gov/compound/16132341>

Expected monoisotopic mass : 4960.48 Da

Measured monoisotopic mass : 4960.49 Da

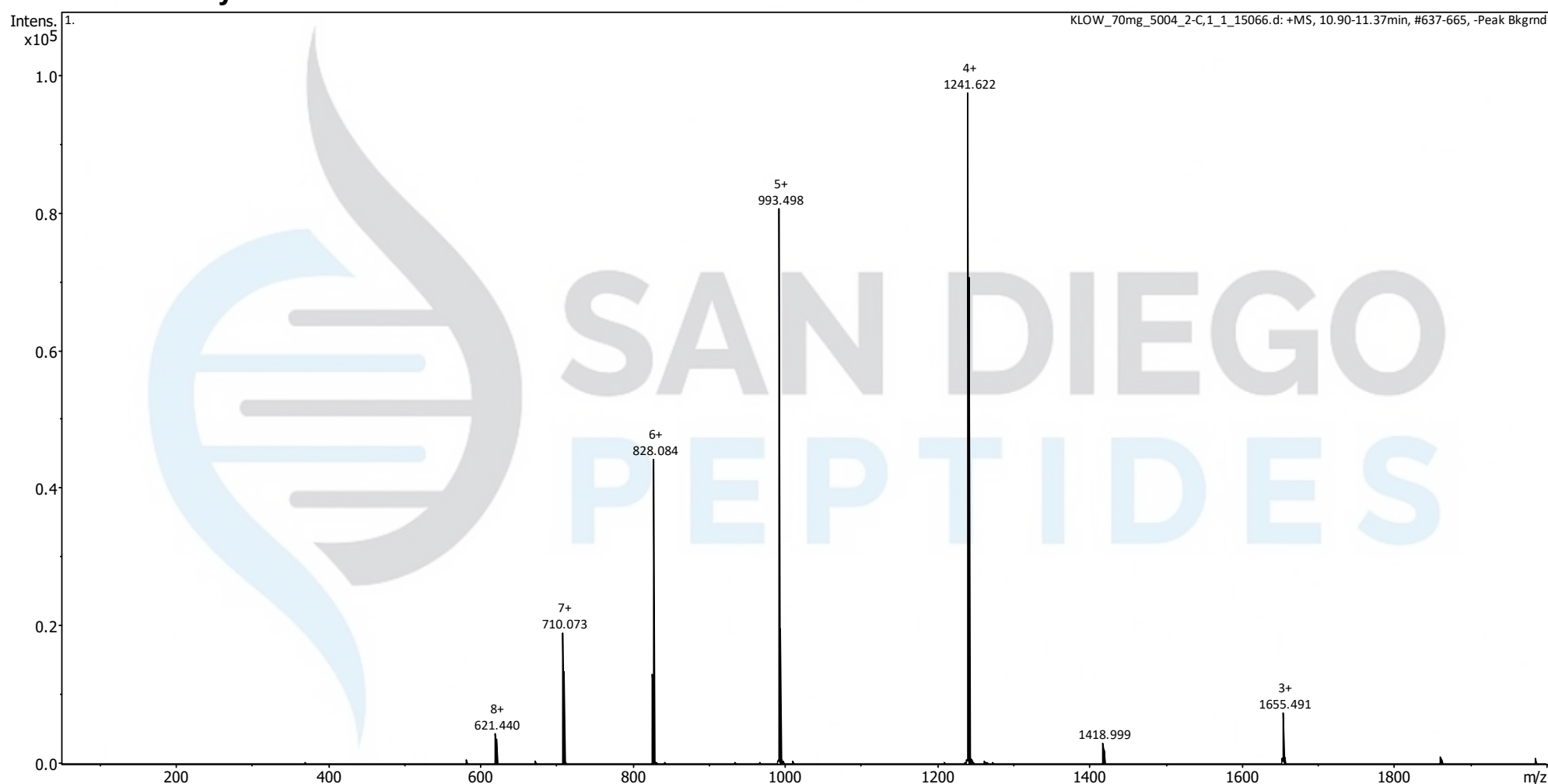
**Molecular weight confirmed**

Note : Monoisotopic m/z values are not easily seen in full spectrum view for larger molecules and peptides.

The dominant isotopic peak (base peak) shown in the spectrum below can be used to approximate the average molecular weight frequently reported by vendors and databases as a secondary means of confirmation.

Recorded MS spectrum

#### Thymosin beta4



Analysis Performed by  
Ken Pendarvis, ChE  
Analytical Chemist  
MZ Biolabs  
[contact@mzbiolabs.com](mailto:contact@mzbiolabs.com)



2025-07-01

## GHK-Cu, BPC-157, Thymosin beta4, KPV

### Mass Spectrometry (MS) – Identity Test

#### Identity confirmed using HPLC-MS

Molecular weight calculated using monoisotopic m/z values from mass spectrum

**KPV PubChem CID : 125672**

<https://pubchem.ncbi.nlm.nih.gov/compound/125672>

Expected monoisotopic mass : 342.23 Da

Measured monoisotopic mass : 342.23 Da

**Molecular weight confirmed**

Note : Monoisotopic m/z values are not easily seen in full spectrum view for larger molecules and peptides.

The dominant isotopic peak (base peak) shown in the spectrum below can be used to approximate the average molecular weight frequently reported by vendors and databases as a secondary means of confirmation.

#### KPV Recorded MS spectrum



Analysis Performed by  
Ken Pendarvis, ChE  
Analytical Chemist  
MZ Biolabs  
[contact@mzbiolabs.com](mailto:contact@mzbiolabs.com)



2025-07-01